



BORA KORKUT
ESTHETIC & RESTORATIVE DENTISTRY

THE ULTIMATE KIT

FOR SIMPLE AND ADVANCED
RESTORATIONS

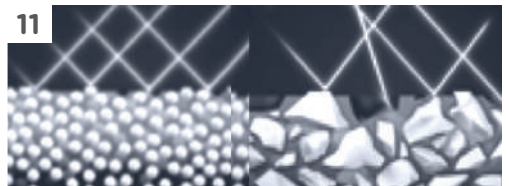
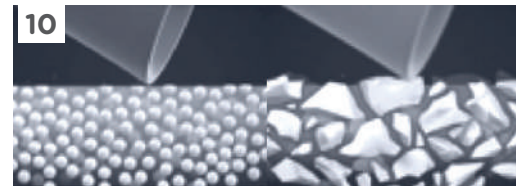
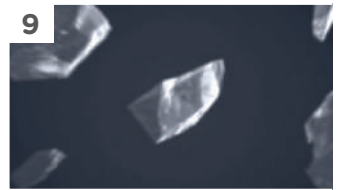
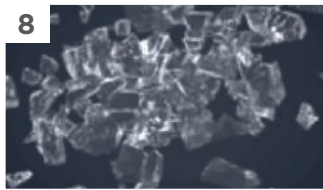
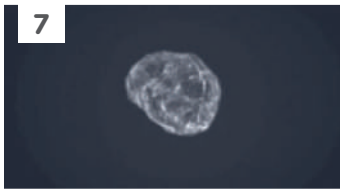
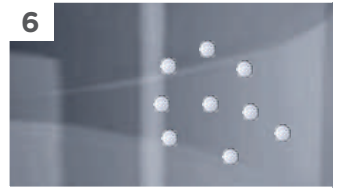
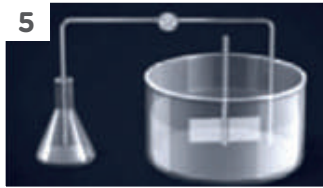
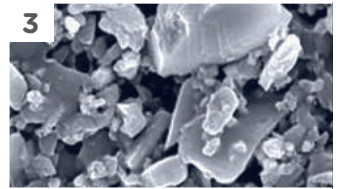
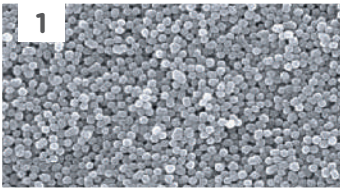
Recommended by

Dr. Bora Korkut

 **Tokuyama**



Tokuyama Dental, with head office in Japan, for the last **40 years** has been launching on the international market increasingly **innovative products**. Its success stems from the **most advanced technologies** developed by Tokuyama Corporation, one of the world **greatest chemical multinationals**, with 100 years' history.



Really innovative thanks to the Tokuyama Sol-Gel Method. A unique, patented and unrepeatable formulation.

- Tokuyama Dental has created the only really spherical fillers thanks to the patented Sol-Gel system, the innovative technology which gave the features of the the Supra-Nano molecular size to allow esthetic results with very smooth surfaces and utmost final shine. Tokuyama technology smiles to your patients.
- The secret of our materials is contents in our chemical expertise, and on the passion we put developing products, for the future needs of dentistry.
- 40 YEARS OF SOL-GEL METHOD Maximum ease of use, extreme modeling and polishing, total chromatic correspondence and brilliance over time, are the result of the patent that for 40 years has given your patients a new smile: Tokuyama SOL-GEL Method.



1-2-3 → SEM images (Estelite Asteria, Estelite Bulk Fill Flow, comparative other brands).

4-5-6 → Sol-Gel Method patented by Tokuyama, where we synthesize filler on the molecular level in order to control size and shape producing uniform ideal-sized “Supra-Nano Spherical Filler”.

7-8-9 → The filler in our competitors’ composite resin is made of mechanically ground quartz or glass, and varies in size and shape.

10-11 → Effects: uniform size and shape filler and more hardness surface, more aesthetic, high polishability, gloss retention over time even after natural wear (refracted and widespread light).

ESTELITE ASTERIA

SIMPLY AESTHETIC

Estelite Asteria, like all Tokuyama's composites, contains a **really spherical filler** thanks to the exclusive patent **Sol-Gel Method**, ensuring a **molecular structure** with **accurate size and shape**. Combination of **unique features** of manageability and esthetic outcome, **very user friendly** and **easy to model and polish, total shade matching** and **shine over time**: these features are the result of our patented Sol-Gel Method, for a new smile on your patients' faces.



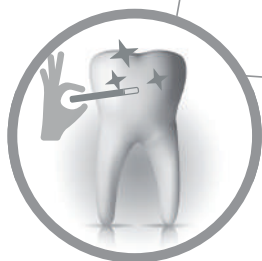
MARGINI
INVISIBILI



BRILLANTEZZA SUPERIORE
E LUCENTEZZA DUREVOLE



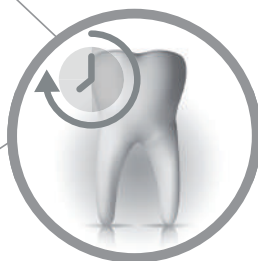
STRATIFICAZIONE
SEMPLIFICATA



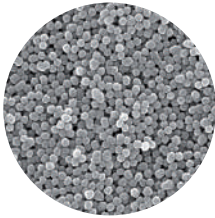
MAGISTRALMENTE
MANEGGIABILE



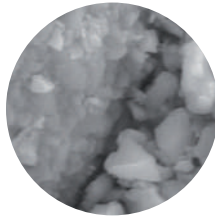
NON APPICCIOSO
E FACILE DA PLASMARE



TEMPO DI LAVORAZIONE ESTESO
(90 SECONDI ALLA LUCE AMBIENTALE - 10.000 LUX)



ESTELITE ASTERIA 20.000X



CERAM.X UNIVERSAL* 20.000X

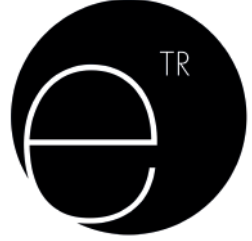


Simplifying is the right word to describe this new, highly aesthetic composite, based on the chromatic and translucency matching of body and enamel masses. Both are able to replicate nature: body shades modulate the degree of translucency through their thickness while enamel shades provide effects similar to the enamel of natural teeth. Few essential shades (7 body and 5 enamel shades) are able to cover almost all clinical needs of professionals. In addition, the material can also be applied using a simplified technique, thus making the work of professionals easier, as well as Dr. Bora Korkut described in this booklet. This product provides comfort and work ergonomics in the dental office: a close match in the evolution of conservative dentistry!

ESTELITE ASTERIA encompasses various optical properties to obtain a highly aesthetic restoration, taking advantage of the filling con-

struction patents and using the polymerization designed by Tokuyama research centers. ESTELITE ASTERIA contains 82% by weight and 71% by volume of filler consisting mainly of silica and zirconia. The shape of the inorganic fillers in ESTELITE ASTERIA is spherical (average particle size 200 nm). This spherical filler, Supra-Nano, favors a very smooth surface with a high degree of gloss, easily obtainable and long-lasting. The high percentages of filler contained within ESTELITE ASTERIA offer reduced polymerization shrinkage and exceptional wear resistance. ESTELITE ASTERIA, thanks to the "Radical Amplified Photopolymerization (RAP)" technologies, offers a lot of time for processing the material under the lamp of the unit and a quick of photopolymerization. ESTELITE ASTERIA has excellent workability properties, is non-sticky and is easy to sculpt.

* Non è un marchio registrato Tokuyama Dental Corporation



BORA KORKUT

Assoc. Prof. Dr. Bora KORKUT,

*PhD in Conservative Dentistry

*Specialist in Restorative Dentistry

Graduated from Marmara University, Faculty of Dentistry in 2008. In 2015, he had the 'PhD.' title in Conservative Dentistry and the 'Specialist' title in Restorative Dentistry. He has been working as an academic member (Associate Professor) at Marmara University, Dentistry Faculty, Department of Restorative Dentistry.

He has many international scientific publications about direct and indirect restorations, pre-restorative clear aligners, ICON therapy, tooth bleaching, clinical dental photography, tooth wear, Cad/Cam restorations, magnification in dentistry, and caries diagnosis & management. He has lectured in many international dental meetings since 2015 and also participated as an instructor in more than 120 hands-on courses.

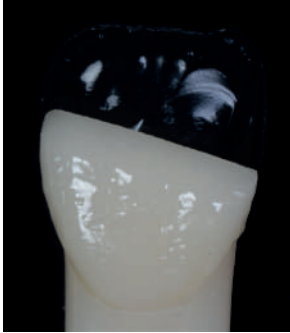
He is the editor and author of the Esthetic Anterior Composite Restorations book published by Quintessence Publishing in 2025. It was recently translated into Turkish, Portuguese, and Chinese, and the 3rd edition of the Turkish version was published.

He is a member of the 'Bio-Emulation Group' and K.O.L. of various international dental companies.



CLINICAL APPLICATION PROTOCOL FOR THE 'ULTIMATE KIT'

- ADVANCED COMPOSITE LAYERING -



Beveling & silicone index guidance



Palatal wall : Direct application of Estelite Universal Flow Medium) CE shade on the silicone index. As an alternative, it can be generated using Asteria WE shade. Palatal wall should be thin and highly translucent.



Masking the crack line by layering Estelite Asteria BL at the very deep part. Always layer the more chromatic or opaque color closer to the palatal side. Layering length should be short, away from the incisal edge. Layering thickness should be correct, reaching at most to the mid part of the beveling thickness. The rest of the palatal wall surface should be clean.



Forming the interdenal walls by using Estelite Asteria WE shade. These walls should be thin, side walls, in harmony with the intact dental morphology. Enamel or body shades can be used to form them, while it depends on the demanded thickness and translucency level.



Forming the mamelons by using Estelite Asteria A1B shade. Also A2B shade can be used depending on the chroma level of the reference tooth/tooth part. Shape of the mamelons should be simulated by properly analyzing the symmetrical tooth. Layering length of the mamelons should be irregular at the incisal edge (some parts reaching and some not reaching the edge). Layering thickness should be proper reaching to top surface at the crack line, slightly exceeding the beveling border.



Forming the incisal halo effect by using Estelite Color MCO tint effect. This application is not needed for every case and should be performed depending on the analysis of the reference tooth. A thin layer should be placed carefully at the incisal edge without touching the inside of the palatal wall. In some cases, small mass can be placed intentionally inside to mimic an opaque lesion appearance.



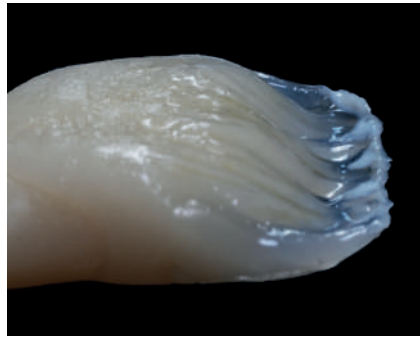
Forming the incisal opacities by using the Estelite Color White tint effect. This application is not needed for every case and should be performed depending on the analysis of the reference tooth. These opacities aimed to create the irregular 'Cloud Effect' at the incisal edge. The white projections are usually performed in the spaces between the mamelons, starting from incisal edge. For a more chromatic outcome, the same procedure can also be performed using the Estelite Color MCO tint effect.



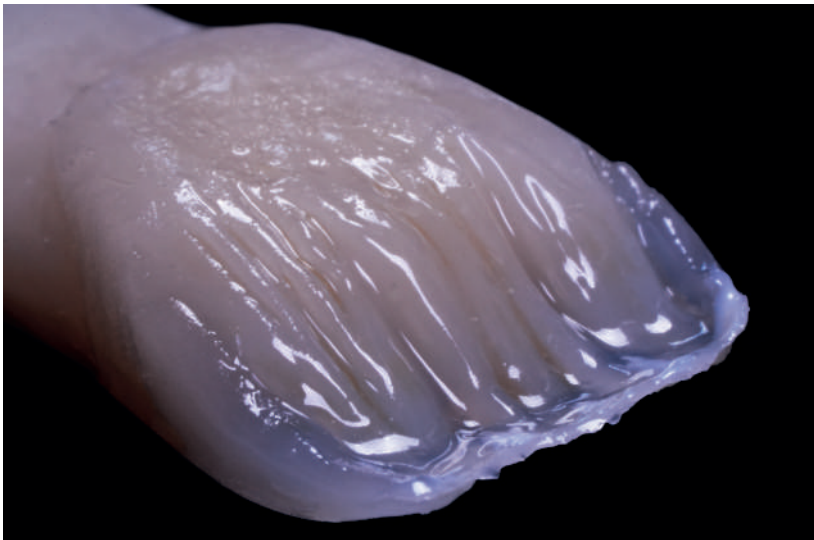
Additionally, more tint effects can be used in this step. The tint effects of Estelite Color kit, especially like Ochre and Blue, can be used to enhance the optical effects of the restoration. However, it should be performed depending on the analysis of the reference tooth.



Filling the spaces between the mamelons by using Estelite Color Clear tint effect to minimize the air bubbles. This highly translucent tint effect also enhances the visibility mamelon effect. Excessive resin should be removed using clean bonding applicators.



Checking the vestibular surface level of the body shade layering from side view. The height and convexity level of the body shade layering in this view determines the visibility of the final grayish color at the incisal edge. It should be properly simulated by analyzing the symmetrical tooth.



The end of dentin/body shade layering.



Additive surface finishing by using Estelite Asteria WE shade and a composite brush.



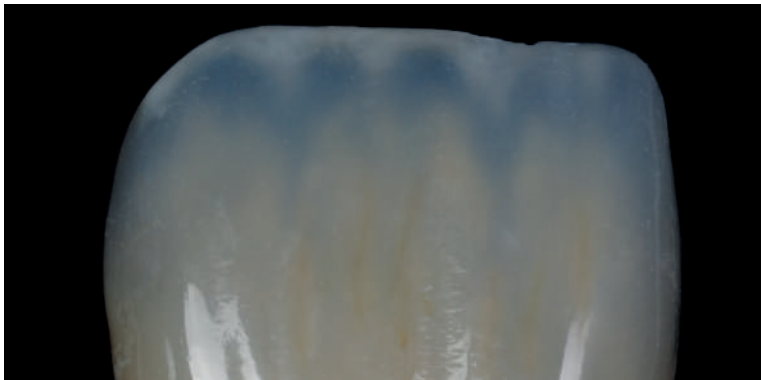
Simulating natural dental morphology and surface texturing.



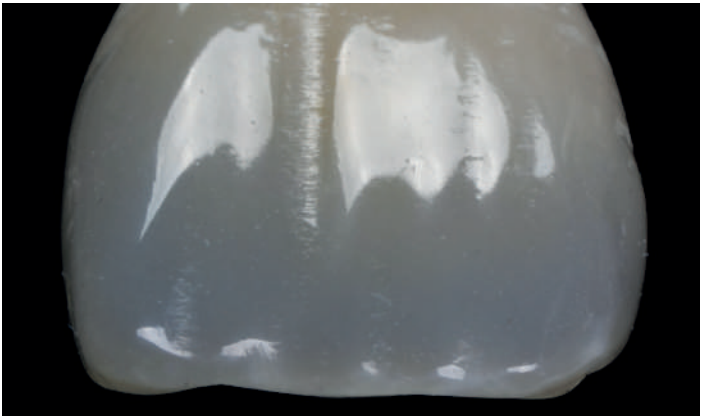
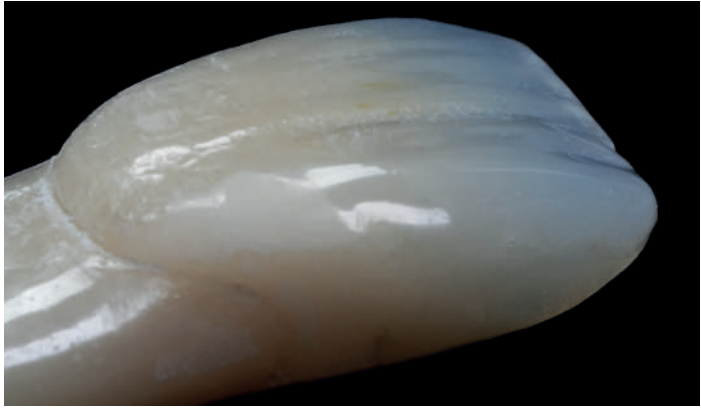
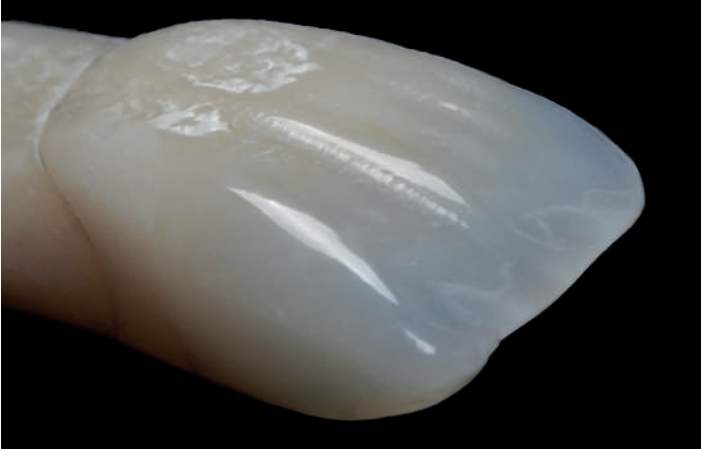
Pre-polishing by Estepolisher Tornado spiral wheel (medium grit).



High-Shine-polishing by Estepolisher Tornado spiral wheel (fine grit) and then by the polishing paste.



Final view of the incisal mamelon effects (increased contrast).



Kit Content



ESTELITE ASTERIA

A1B A2B BL WE

ESTELITE COLOR

MCO White Clear



ESTELITE UNIVERSAL FLOW (MEDIUM) CE

ESTEPOLISHER VALUE SET



ANKARA OFİS

Dr. Mediha Eldem Sk.
No: 68/16 Kızılay Ankara TÜRKİYE
TEL: +90 312 430 55 16
FAKS: +90 312 430 55 17

İSTANBUL OFİS

Oğuzhan Cad. Çağanak Sk.
No: 5/3 Fındıkzade Fatih İstanbul TÜRKİYE
TEL: +90 212 491 10 88
FAKS: +90 212 491 10 89

 **Tokuyama**

info@tokuyamaturkiye.com
www.tokuyamaturkiye.com